



# Around the Docks



PGH Mission: To best utilize our resources to facilitate, enhance and stimulate international trade, economic development and tourism for the region.

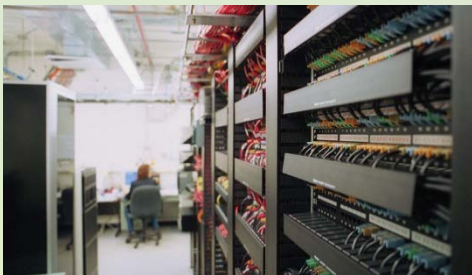
## Reliable Infrastructure

### The Satsop Business Park – What you expect and more

Flooding, power outages, and the looming threat of an earthquake can significantly impact your business and your ability to serve customers. Whether your business is finance or manufacturing, warehousing or data storage, even the smallest blip on the radar can send shock waves through your business. This past winter, the Park's robust power and telecommunication infrastructure served the 15 data colocation tenants and businesses running at full speed.

At 390' above sea level, the Park boasts power reliability of 99.99% stemming from the two on-site power switch yards. With commercial-grade UPS and generators on a seismically stable location fed by geographically diverse fiber optic feeds, companies will find all the amenities they would expect from a state-of-the art business park to stay connected to their customers. Equipped with a 32 cabinet colocation center and ample office space, Satsop Business Park provides a safe place for emergency operation centers and storage of critical equipment.

For more information on locating at Satsop visit [www.satsop.com](http://www.satsop.com) or contact Alissa Shay at 360-482-1651 or [ashay@satsop.com](mailto:ashay@satsop.com).



## Partnerships for a Stronger Economy

### Partnerships essential to navigation channel maintenance & improvement



*Clockwise from left: An American Construction dredge performs maintenance dredging in the channel; Executive Director Gary Nelson, Senator Patty Murray and USACE Colonel John G. Buck, Commander, Seattle District share a laugh at the signing of the Project Partnership Agreement for the deepening project last May; Deputy Director Leonard Barnes meets with Congressman Derek Kilmer in Washington DC to discuss Port infrastructure needs.*

Over the past ten years vessel traffic and cargo volumes shipped through the Port of Grays Harbor have grown 400%, generating hundreds of new direct jobs and millions of dollars for the local economy. Maintaining this economic engine for the community and the nation relies on partnerships with the federal and state government, as well as private companies that invest in upland facilities and infrastructure.

The Grays Harbor Navigation Channel requires annual maintenance dredging in partnership with the U.S. Army Corps of Engineers. Thanks to continued strong support from Senator Patty Murray, Senator Maria Cantwell and Congressman Derek Kilmer, annual maintenance dredging

of the channel is scheduled to begin in April.

In addition, the deepening of the channel to its congressionally authorized depth is on track to begin this fall. Federal funding for this important project has been secured, with the State of Washington also dedicating capital funding to assist with the local match portion.

"To remain globally competitive, it is important that Grays Harbor be capable of handling growing vessel sizes," reports Executive Director Gary Nelson. "Working with the Corps and our Federal and State officials we are ensuring Grays Harbor's ability to accommodate the growth of our customers and the continued economic benefit to Grays Harbor and our nation."

# AHS students explore local workforce opportunities



(Left) Branch Manager Dean Carson and Service Manager Eric White of Kenworth Northwest talk to AHS business students about job opportunities available at their location; (Right) Bob Martin of Paneltech gives the students a tour of their manufacturing facilities in Hoquiam.

Job creation is a significant focus for the Port of Grays Harbor and ensuring there is an available and skilled workforce to fill those jobs is equally important. Last month, the Port and a handful of tenants partnered with Aberdeen High School business classes to provide students with a firsthand look at the types of job opportunities that are available in their own backyard.

Students heard from business leaders at Kenworth Northwest, Renewable Energy Group (REG), Paneltech, Westport, LLC, and the Port of Grays Harbor about the types of positions each has to offer and the various levels of education and skills that are needed to obtain those positions.

“Our tenants strive to provide jobs that will enhance the Grays Harbor economy and we want our youth to know about the opportunities they have right here in Grays Harbor. One of our jobs as Port Commissioners is to continue to attract businesses that will provide strong jobs with longevity to local residents,” expressed Commission President Jack Thompson.

Beginning mid-May, the Port will host more than 850 4<sup>th</sup> grade students, teachers and parent chaperones when it kicks-off the 6<sup>th</sup> year of its 4<sup>th</sup> grade tour program. The students will study Port related curriculum packets prior to coming to the Port for a presentation and tour of the marine terminals.

# PSAP safely delivers more than 1.6 million metric tons in 2015

For more than 100 years, Grays Harbor has benefitted from the rail that connects the community to markets in North America and abroad. In 2015, over 1.6 million metric tons of cargo, including automobiles, agricultural products, and liquid bulks were transported to the Port via rail by Genesee & Wyoming’s Puget Sound and Pacific Railroad (PSAP) from all over the nation.

In a report to the Port Commission, PSAP officials proudly reported on the improvements made to rail infrastructure in 2015, including the replacement of crossings at the Gateway Mall area. PSAP also remained injury free in 2015, for more than 1000+ days, and counting.

“Safety continues to be our top priority,” stated PSAP General Manager Josh Connell. “We look

## Calendar

- March 23 *Asian Glory@ T4*
- March 29 *POS Oceania@ T4*
- March 30 *African Spoonbill@ T2*
- April 3 *Kobe Gloria@ T2*
- April 7 *Rio Grande@ T4*
- April 10 *Argon@T1*
- April 12 *PGH Commission Meeting, PGH Offices @ 9am*
- April 13 *Nippon Maru@ T2*
- April 18 *Hoegh Oslo@ T4*



## Around the Docks

is a publication of the

## Port of Grays Harbor

*On Washington’s Pacific Coast*

It is available

online at

**PortofGraysHarbor.com**

To join our mailing list contact  
Kayla Dunlap at [kdunlap@portgrays.org](mailto:kdunlap@portgrays.org)



A PSAP locomotive pulls empty rail cars around the loop track as a vessel loads at Terminal 2 in the distance. PSAP connects the Port of Grays Harbor and its customers to both Class I railroads, UP and BNSF.

forward to working with the Port to grow opportunities in 2016.”

“Rail is a vital component of our community’s ability to attract investment and jobs,” voiced Commissioner Stan Pinnick. “With more than 80% of the cargoes handled at the marine terminals dependent on the rail system, we thank you for your investment and the role you play in the Grays Harbor economy”